

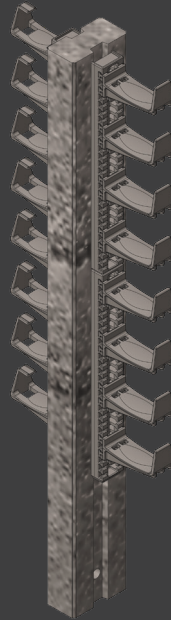
PEGASUS® CABLE HANGERS



▶ **Composite
Hanger
System**



▶ **Retrofit
Hanger
System**



▶ **Multi-Fix
Hanger
System**



▶ **Convex
Cable
Hanger**

TRIED | TESTED |
TRUSTED | WORLDWIDE |

ELLIS



Holding Power

Ellis is a wholly owned UK manufacturer with a global partnership network of distributors reaching over 50 countries worldwide.

We have over 60 years of expert engineering design and manufacturing experience delivering safety-critical cable cleats to industries managing essential cable infrastructure. With a track record of proven safety and unparalleled reliability, we specialise in safeguarding critical operations across various sectors, from energy production to major infrastructure and transportation.

All Ellis products are designed and manufactured following the highest industry regulations and accreditations. In addition, our Pegasus® hanger range has been developed in partnership with London Underground adhering to the particularly stringent LUL 1-085 guidelines.



 <p>bsi Quality Management Systems CERTIFIED</p>	<p>ISO 9001 Quality Management Systems CERTIFIED</p>	<p>ISO 14001 Environmental Management CERTIFIED</p>	<p>ISO 45001 Occupational Health and Safety Management CERTIFIED</p>
----------------------------------------------------------------------------------------------------------------------------------------------------	--------------------------------------------------------------	-------------------------------------------------------------	------------------------------------------------------------------------------

 <p>BS EN 1090 ISOQAR REGISTERED 0026</p>	 <p>UKAS MANAGEMENT SYSTEMS 0026</p>
------------------------------------------------------------------------------------------------------------------------------------------	---------------------------------------------------------------------------------------------------------------------------------

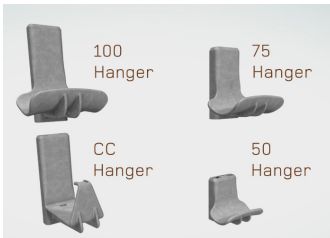
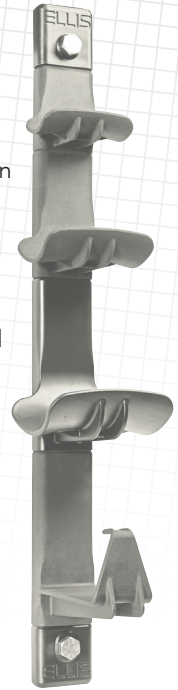
Cert no. 21876

 <p>UL US LISTED VRT+06 4CGB</p>	 <p>UL US LISTED VRQ+03 4CGB</p>	 <p>ABS (American Bureau of Shipping) Type Approval</p>	<p>Our Cable cleats are compliant with the requirement of London Underground Standard 1-085. Product Register No. 361.</p>	 <p>DNV</p>
-------------------------------------------------------------------------------------------------------------------------	-------------------------------------------------------------------------------------------------------------------------	----------------------------------------------------------------------------------------------------------------------------------------------------	----------------------------------------------------------------------------------------------------------------------------	------------------------------------------------------------------------------------------------

PEGASUS®

COMPOSITE HANGER SYSTEM

- ▶ Composite cable hanger system: polymer hanger and fully enclosed corrosion-resistant aluminium spine.
- ▶ Up to 50% lighter than conventional steel system, improves installation time by reducing installer fatigue will not rust or corrode.
- ▶ Insulating hanger with excellent dielectric properties, no earth bonding or grounding required.
- ▶ Curved profile hanger design allows natural cable sag multiple combinations of hangers available; curved configuration to suit tunnel walls also available. Available in LUL 1-085 LSF material for indoor applications or UV-stabilised material for external applications.
- ▶ Impulse tested to 30KV.
- ▶ Listed for use on the London Underground Product Register: Product ID 3153.



Hanger	SWL kg
100	60
75	45
50	45
CC	25

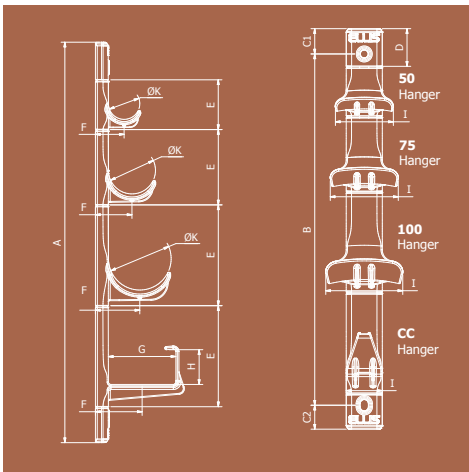


*Load Capacity: Brackets with multiple hook configurations are designed to operate with all hooks carrying their maximum load. Dimensions are provided with a tolerance, refer to detailed drawings for details.

PEGASUS®

COMPOSITE HANGER SYSTEM

PART NO.	WAYS	DIMENSIONS (MM)											FIXING HOLES	PACK QTY.	MODULAR WEIGHT L	WEIGHT KG	SWL KG
		A	B	C1	C2	D	E	F	G	H	I	K					
PG050-1	1	197	121	40	38	60	-	46	-	-	92	Ø50	M12	1	0.16	0.3	45
PG050-2	2	276	200	40	38	60	79	46	-	-	92	Ø50	M12	1	0.16	0.46	90
PG050-3	3	355	279	40	38	60	79	46	-	-	92	Ø50	M12	1	0.16	0.62	135
PG050-4	4	434	358	40	38	60	79	46	-	-	92	Ø50	M12	1	0.16	0.78	180
PG050-5	5	513	437	40	38	60	79	46	-	-	92	Ø50	M12	1	0.16	0.94	225
PG050-6	6	592	516	40	38	60	79	46	-	-	92	Ø50	M12	1	0.16	1.1	270
PG075-1	1	237	161	40	38	60	-	58	-	-	108	Ø75	M12	1	0.25	0.39	45
PG075-2	2	357	281	40	38	60	120	58	-	-	108	Ø75	M12	1	0.25	0.64	90
PG075-3	3	476	400	40	38	60	120	58	-	-	108	Ø75	M12	1	0.25	0.89	135
PG075-4	4	595	519	40	38	60	120	58	-	-	108	Ø75	M12	1	0.25	1.14	180
PG075-5	5	714	638	40	38	60	120	58	-	-	108	Ø75	M12	1	0.25	1.39	225
PG075-6	6	834	758	40	38	60	120	58	-	-	108	Ø75	M12	1	0.25	1.64	270
PG100-1	1	279	203	40	38	60	-	71	-	-	122	Ø100	M12	1	0.41	0.55	60
PG100-2	2	440	364	40	38	60	161	71	-	-	122	Ø100	M12	1	0.41	0.96	120
PG100-3	3	600	524	40	38	60	161	71	-	-	122	Ø100	M12	1	0.41	1.37	180
PG100-4	4	760	684	40	38	60	161	71	-	-	122	Ø100	M12	1	0.41	1.78	240
PG100-5	5	921	845	40	38	60	161	71	-	-	122	Ø100	M12	1	0.41	2.19	300
PG100-6	6	1085	1009	40	38	60	161	71	-	-	122	Ø100	M12	1	0.41	2.6	360
PGCC-1	1	279	203	40	38	60	-	74	107	55	57	-	M12	1	0.31	0.45	25
PGCC-2	2	440	364	40	38	60	161	74	107	55	57	-	M12	1	0.31	0.76	50
PGCC-3	3	600	524	40	38	60	161	74	107	55	57	-	M12	1	0.31	1.07	75



PEGASUS IS A MODULAR SYSTEM
AND CAN BE SUPPLIED IN ANY
CONFIGURATION

PART NUMBERS FOR SPECIAL
CONFIGURATIONS CAN BE WORKED
OUT AS FOLLOWS:

Example: Part Number for product
shown would be:
PG 50-1/75-1/100-1/CC-1

PG defines the product as Pegasus

The size and number of hangers is then
listed as shown, starting from the top

Any number of hangers can be
specified in any order

Standard material is suitable for tunnel
applications, for UV stabilised material
add -UV to part#

Standard product is straight but can be
supplied curved, for curved option add
-C to end of part

PEGASUS®

RETROFIT CABLE HANGERS

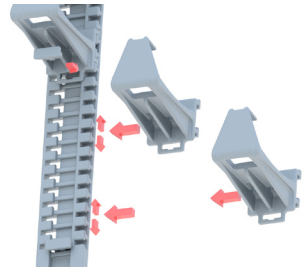
- ▶ Lightweight hanger system designed to be retrofitted in existing cable installations
Low profile design allows hanger to be slid in behind existing cables without disturbing existing hangers
- ▶ Polymer material will not rust or corrode
- ▶ Insulating hanger with excellent dielectric properties, no earth bonding or grounding required
- ▶ Adjustable hanger position in 20mm increments
- ▶ Available with short (120mm) or long hangers (150mm)
- ▶ Available in LUL 1-085 LSF material for indoor applications or UV-stabilised material for external applications
- ▶ Slide in hangers and keepers allow rapid installation
- ▶ Safe working load 20kg per hanger



120MM HANGER



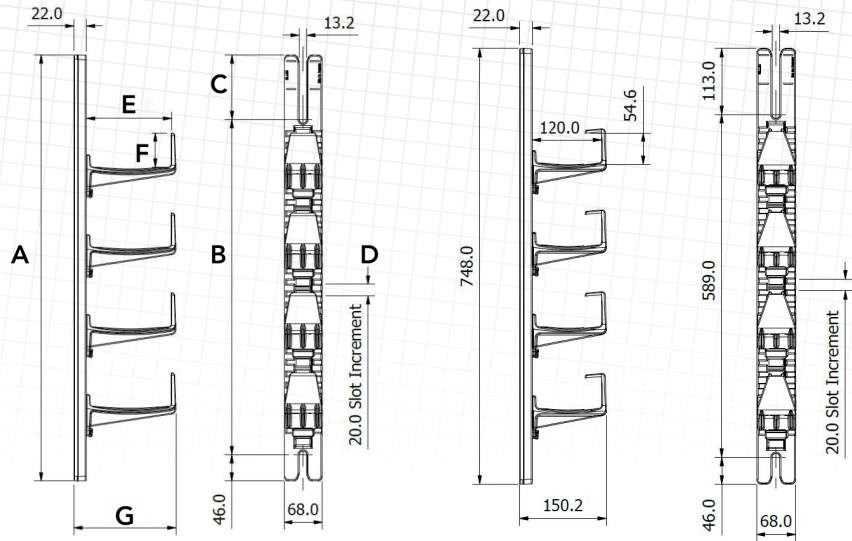
INSTALLATION ON LONDON UNDERGROUND



The hangers slide into the backplate and are held in position by a removable keeper. The design allows for fine adjustment of the hanger position to suit the location of the installed cable.

PEGASUS®

RETROFIT CABLE HANGERS



PART NO.	DESCRIPTION	DIMENSIONS (mm)							MATERIAL	WEIGHT (g)
		A	B	C	D	E	F	G		
SFPG-BKPL748	RETROFIT BACKPLATE	748	589	113	20	-	-	-	LUL 1-085	960
SFPG-BKPL748-UV	RETROFIT BACKPLATE (UV)	748	589	113	20	-	-	-	UV RESISTANT	815
SFPG-CC01	CC01 HANGER & KEEPER	-	-	-	-	120	54.6	150.2	LUL 1-085	260
SFPG-CC01-UV	CC01 HANGER & KEEPER (UV)	-	-	-	-	120	54.6	150.2	UV RESISTANT	230
SFPG-CC02	CC02 HANGER & KEEPER	-	-	-	-	143	60	180	LUL 1-085	295
SFPG-CC02-UV	CC02 HANGER & KEEPER (UV)	-	-	-	-	143	60	180	UV RESISTANT	250

Dimensions are provided with a tolerance, refer to detailed drawings for details.

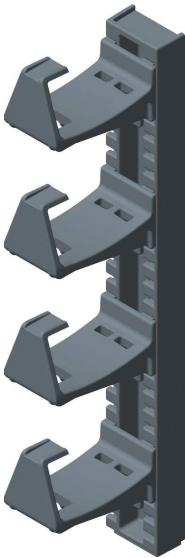
* Load Capacity: Brackets with multiple hook configurations are designed to operate with all hooks carrying their maximum load. Dimensions are provided with a tolerance, refer to detailed drawings for details.

This data sheet is subject to change without notice. The information provided has been generated in laboratory conditions, as such results in use may vary.

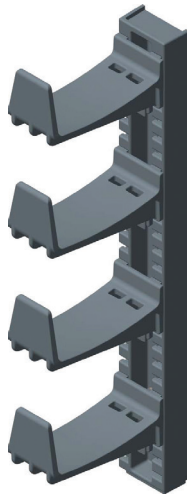
PEGASUS®

MULTI-FIX CABLE HANGERS

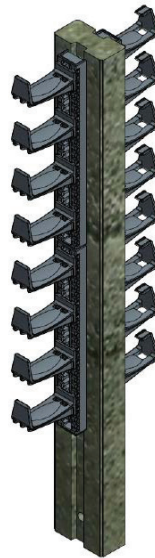
- ▶ Hanger system designed to be affixed to posts or walls
- ▶ Low profile design allows hanger to be slid in behind existing cables without disturbing existing hangers
- ▶ Polymer material will not rust or corrode
- ▶ Insulating hanger with excellent dielectric properties, no earth bonding or grounding required
- ▶ Adjustable hanger position in 20mm increments
- ▶ Available with short (120mm) or long hangers (150mm)
- ▶ Available in LUL 1-085 LSF material for indoor applications or UV-stabilised material for external applications
- ▶ Slide-in hangers and keepers allow rapid installation
- ▶ SWL 20kg per hanger



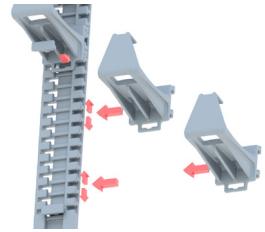
120MM HANGER



150MM HANGER



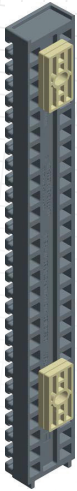
POST HANGER INSTALLATION



The hangers slide into the backplate and are held in position by a removable keeper. The design allows for fine adjustment of the hanger position to suit the location of the installed cable.

PEGASUS®

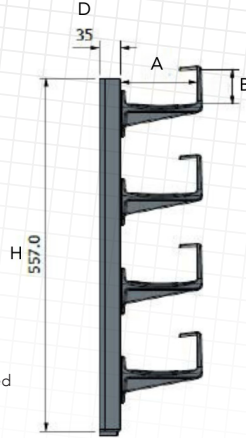
MULTI-FIX CABLE HANGERS



Spacers are available to space hanger correctly if it is to be mounted in a concrete post with a slot. Spacers are 8mm thick and can be stacked. See part numbers at bottom of page.



Backplates are supplied undrilled and are required to be drilled on assembly dependant on fixing. Stainless Steel washers are required to spread the load over the backplate. Fixings are M12 and minimum two are required.



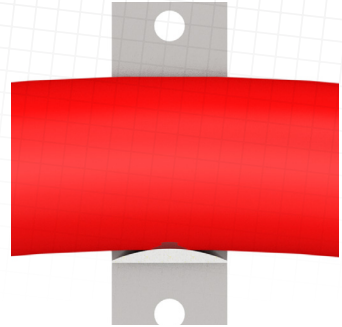
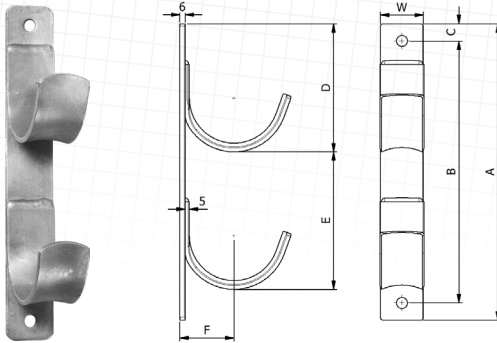
PART NO.	DESCRIPTION	DIMENSIONS (mm)					MATERIAL	WEIGHT (g)
		H	W	D	A	B		
PFPG-BKPL565	MULTI-FIX BACKPLATE	557	67.5	35	-	-	LUL 1-085	790
PFPG-BKPL565-UV	MULTI-FIX BACKPLATE (UV)	557	67.5	35	-	-	UV RESISTANT	790
PFPG-SPC01	BACKPLATE SPACER	-	-	-	-	-	LUL 1-085	19
PFPG-SPC01-UV	BACKPLATE SPACER (UV)	-	-	-	-	-	UV RESISTANT	19
OF-PFPG-WASHER-01-4	BACKPLATE WASHER	-	-	-	-	-	STAINLESS STEEL	-
SFPG-CC01	CC01 HANGER & KEEPER	-	-	-	120	54.6	LUL 1-085	260
SFPG-CC01-UV	CC01 HANGER & KEEPER (UV)	-	-	-	120	54.6	UV RESISTANT	230
SFPG-CC02	CC02 HANGER & KEEPER	-	-	-	143	60	LUL 1-085	295
SFPG-CC02-UV	CC02 HANGER & KEEPER (UV)	-	-	-	143	60	UV RESISTANT	250

* Load Capacity: Brackets with multiple hook configurations are designed to operate with all hooks carrying their maximum load. Dimensions are provided with a tolerance, refer to detailed drawings for details.

This data sheet is subject to change without notice. The information provided has been generated in laboratory conditions, as such results in use may vary.

CONVEX CABLE HANGER

- ▶ Rounded corners reduce snagging points
- ▶ The convex cable hanger profile reduces the risk of cable damage and facilitates cable sag
- ▶ Spin galvanised (55micron) to BS EN ISO 1461
- ▶ A wide range of sizes is available
- ▶ Custom designs available
- ▶ Curved back plate to suit tunnel walls available



CONVEX CABLE HANGER PROFILE IS KINDER TO THE CABLE

PART NO.	Cable Ø (mm)	NO. OF HOOKS	DIMENSIONS (mm)							FIXING HOLES	WEIGHT (g)	SWL (kg)
			A	B	C	D	E	F	W			
CH1W1	Up to 50	1	145	105	20	105	n/a	37	40	11	490	200
CH2W1	Up to 50	2	235	195	20	105	90	37	40	11	890	200
CH3W1	Up to 50	3	325	285	20	105	90	37	40	11	1270	200
CH4W1	Up to 50	4	415	375	20	105	90	37	40	11	1670	200
CH5W1	Up to 50	5	505	465	20	105	90	37	40	11	2070	200
CH6W1	Up to 50	6	595	555	20	105	90	37	40	11	2460	200
CH1W2	51-75	1	170	130	20	130	n/a	50	50	13	750	250
CH2W2	51-75	2	295	255	20	130	125	50	50	13	1390	250
CH3W2	51-75	3	420	380	20	130	125	50	50	13	2050	250
CH4W2	51-75	4	545	505	20	130	125	50	50	13	2690	250
CH5W2	51-75	5	670	630	20	130	125	50	50	13	3340	250
CH6W2	51-75	6	795	755	20	130	125	50	50	13	3990	250
CH1W3	76-100	1	185	145	20	145	n/a	62	50	13	870	250
CH2W3	76-100	2	345	305	20	145	160	62	50	13	1670	250
CH3W3	76-100	3	505	465	20	145	160	62	50	13	2490	250
CH4W3	76-100	4	665	625	20	145	160	62	50	13	3290	250
CH5W3	76-100	5	825	785	20	145	160	62	50	13	4100	250
CH6W3	76-100	6	985	945	20	145	160	62	50	13	4900	250

* Load Capacity: Brackets with multiple hook configurations are designed to operate with all hooks carrying their maximum load. As standard, parts are spin galvanised to BS EN 1461 (55µm), thicker galvanising options are available on request. Dimensions are provided with a tolerance, refer to detailed drawings for details.

This data sheet is subject to change without notice. The information provided has been generated in laboratory conditions, as such results in use may vary.

SUSPENSION HOOKS

- ▶ Manufactured in mild steel.
- ▶ Hot dipped galvanised after manufacture.
- ▶ Special designs are available on request.
- ▶ Used to hang cables on walls or support structures.



TYPE A



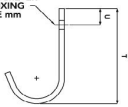
TYPE B



TYPE C

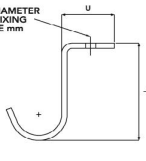
TYPE	PART NO.	MAX CABLE DIAMETER (mm)	DIMENSIONS (mm)			MATERIAL (Size)		PACK QTY	WEIGHT (g)	SWL (Kgs)
			T	U	V	W	Thickness			
TYPE A	SHA1	50	105	25	11	40	6	1	320	200
	SHA2	75	120	25	13	50	6	1	490	250
	SHA3	100	155	25	13	50	6	1	1300	250
TYPE B	SHB1	50	125	55	11	40	6	1	440	200
	SHB2	75	140	60	13	50	6	1	680	250
	SHB3	100	150	60	13	50	6	1	780	250
TYPE C	SHC1	50	125	40	13	40	6	1	460	200
	SHC2	75	140	45	13	50	6	1	700	250
	SHC3	100	150	45	13	50	6	1	780	250

V=DIAMETER OF FIXING HOLE mm

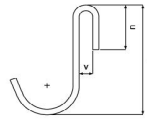


TYPE A

V=DIAMETER OF FIXING HOLE mm



TYPE B



TYPE C

This data sheet is subject to change without notice. The information provided has been generated in laboratory conditions, as such results in use may vary.

ELLIS

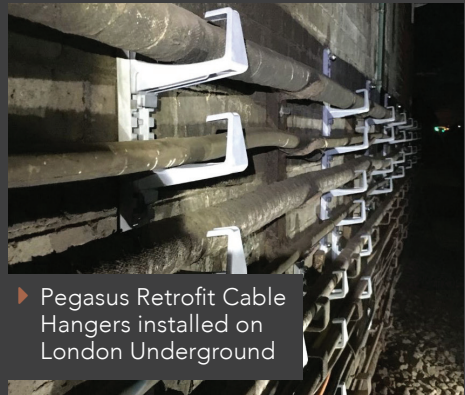
Holding Power

PEGASUS® CABLE HANGERS

- ▶ Corrosion Resistant Composite
- ▶ No earth bonding / grounding required
- ▶ Material variations (LUL 1-085 Compliant for tunnel installations or UV stabilised for outdoor use)
- ▶ Flexibility with modular system design
- ▶ Prioritise Cable Protection



▶ Pegasus Composite Hanger System installed at Summit Tunnel



▶ Pegasus Retrofit Cable Hangers installed on London Underground



▶ Bespoke Hanger System designed & manufactured by Ellis installed at Woodsmith Mine in North Yorkshire

Ellis Patents Ltd
High Street, Rillington, Malton,
North Yorkshire YO17 8LA
United Kingdom

T. +44 (0)1944 758395
F. +44 (0)1944 758808
sales@ellispatents.co.uk
www.ellispatents.co.uk

